



Service Manual

Washing machine

Toploader

AWG 640-1/WP-HU

Model Version	AWG 640-1/WP-HU 8537 640 44850	Page
	Technical data	2
	Spare part list	3 - 4
	Exploded view to 13/96	5
	Exploded view from 14/96	6
	Exploded view	7
	Wiring diagram to 49/95	8
	Wiring diagram from 50/95	9
	Circuit diagram to 49/95	10
	Circuit diagram from 50/95	11
	Program diagram	12

Technical data

Dimensions

Height	88	cm
Width	40	cm
Depth	60	cm

Weight

Net	~ 62	kg
With package	~ 65	kg

General specifications

Voltage	230± 10%	V
Frequency	50	Hz
Connected load	~ 2.2	kW
Fuse	10	A

Drum data

Drum speed

Wash speed	55	rpm
Spin speed	400	rpm

Capacity

Volume	43	l
Max. load dry laundry	5	kg

Electrical building parts

Heating

Type	Tubular radiator	
Rated power draft	1850	W
Rated voltage draft	230	V

Drain pump

Power consumption	~ 40	W
Capacity	11.5	l/min.
Rotation speed	~ 3000	rpm
Height of drain hose	max. 1.00	m
	min. 0.55	m

Motor

Type	Asynchronous 2/12
------	-------------------

Capacitor

	14	μ F
--	----	-----

Timer

Type	Eaton EC 4453
------	---------------

Thermostats

A - a fixed thermostat	40	°C
B - a fixed thermostat	60	°C
C - a fixed thermostat	90	°C
D - a temperature limiter	107	°C

Pressostat (without laundry)

Low level	9 ± 1	l
High level	ca. 22	l
Foam level	ca. 2	l
Overflow level	ca. 30	l

Rotary switch

ON/OFF and spin option	3	pos.
Temperature selector	7	pos.

Push button switch

Half load	1	pol.
-----------	---	------

Spare part list

Model AWG 640-1/WP-HU
Service No. 853764044850
Version 853764044850

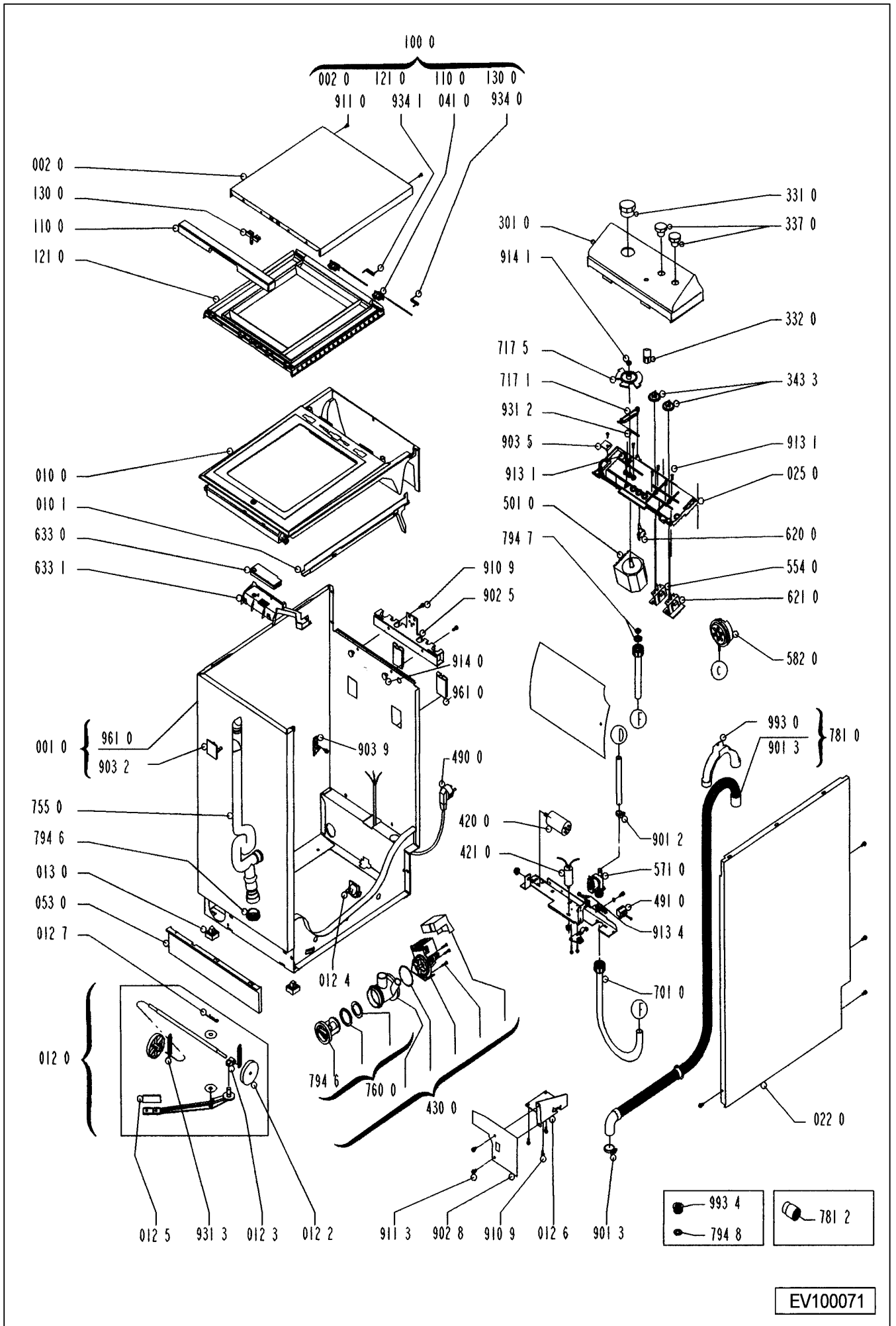
Pos. No.	12NC Code	Description	Pos. No.	12NC Code	Description
001 0	4819 440 19493	Cabinet	554 0	4819 273 28249	Selector
002 0	4819 440 19829	Door	567 0	4812 282 48239	Thermostat 107 ° C (until 01/05/98)
010 0	4819 440 19601	Door frame (to 13/96)	571 0	4819 281 28265	Valve,magnet
010 0	4819 459 48776	Frame (from 14/96)	582 0	4819 271 28925	Pressostat
010 1	4819 404 78394	Water conveyor (to 13/96)	620 0	4819 276 18265	Switch
012 0	4819 310 18304	Trolley kit	621 0	4819 101 48145	Switch
012 2	4819 528 78044	Wheel	633 0	4819 271 38287	Door lock
012 3	4819 532 68171	Bracket for trolley	633 1	4819 404 78969	Support
012 4	4819 528 78045	Roller rear	701 0	4819 530 28932	Hose, inlet 1.5 m cold water
012 5	4819 498 68976	Handle for trolley	702 0	4819 530 28896	Hose
012 6	4819 462 79426	Support trolley	710 0	4819 459 48615	Door,outer
012 7	4819 530 78037	Clip trolley	711 0	4819 418 78981	Door,tub
013 0	4819 462 58301	Foot	712 0	4819 440 19607	Door,inner
022 0	4819 440 18976	Panel,side	712 1	4819 535 98514	Shaft
025 0	4819 440 19651	Bracket	712 2	4819 535 98278	Spring
041 0	4819 417 19334	Hinge	717 0	4819 323 28009	Bowden cable
053 0	4819 440 19142	Plinth	717 1	4819 466 98972	Rocker
061 0	4819 466 88818	Counter weight front	717 5	4819 528 38432	Cam
061 1	4819 466 88978	Counter weight lower	753 0	4819 530 28811	Chamber,air
061 2	4819 401 18789	Clamping piece	754 0	4819 530 28504	Drainhose inner Tub/Pump
080 0	4819 529 18054	Shock absorber	755 0	4819 530 28954	Hose
100 0	4819 440 19719	Door	760 0	4819 360 78363	Lid pump
110 0	4819 498 69902	Handle,door	781 0	4812 530 28953	Drainhose
121 0	4812 440 19554	Door,inner	781 2	4819 532 68554	Sleeve hose
130 0	4819 535 78144	Pin Lock	794 5	4819 530 58026	Gasket Air chamber
141 0	4819 418 78964	Lid	794 6	4819 530 58031	Gasket
143 0	4819 459 48757	Frame	794 7	4822 532 50428	Gasket
200 0	4819 418 18342	Tub	794 8	4819 532 58159	Gasket 1/2
201 0	4812 440 19669	Cover TUB	901 0	4819 401 18283	Strap
220 0	4819 418 18311	Drum	901 1	4819 492 68337	Strap
223 0	4819 418 49713	Drum lifter	901 2	4812 290 68157	Strap SNP 8
252 0	4819 404 49227	Clamp thermostat	901 3	4819 401 18563	Clamp,hose
252 1	4819 310 38541	Gasket Klixon	901 5	4819 535 38038	Clip bearing
271 0	4819 310 39159	Belt,driving	902 1	4812 401 18428	Holder,hose
272 0	4819 528 88106	Pulley (drum)	902 5	4819 404 79434	Holder
272 1	4819 532 28263	Ring Cone 10 degrees	902 8	4819 404 78396	Tube,stablizer over flow
292 0	4819 532 68244	Gasket tub	903 2	4819 404 49431	Support overflow
301 0	4819 453 19669	Control panel	903 3	4819 492 68338	Clip tub
303 0	4819 498 69853	Handle	903 5	4819 401 18585	Fastener sleeve
331 0	4812 412 58868	Knob Timer	903 7	4819 492 68381	Clip
332 0	4819 410 28653	Push button	903 9	4819 404 49688	Support Top
337 0	4812 412 58867	Knob	910 0	4819 502 38231	Screw
343 3	4819 528 38131	Coupling piece	910 1	4819 502 18417	Screw
401 0	4819 361 58051	Motor 2/12 pol.	910 5	4819 502 38265	Screw VAB 4,5x20
420 0	4819 121 18093	Capacitor 14 µ F	910 9	4819 502 18343	Screw TF 5x30
421 0	4819 121 18266	Interf.filter	911 0	4819 502 18465	Screw
430 0	4819 360 18203	Pump,draining synchronus	911 2	4819 502 38232	Screw TF 4x20
451 0	4812 259 28721	Heating element 1850 W	911 3	4819 502 38233	Screw N1 2x1/2
451 2	4819 404 49558	Clamp Heating element	911 4	4819 502 38289	Screw
490 0	4819 321 18292	Connect.cable EU	911 5	4819 502 18202	Screw CHC 6x25
491 0	4819 290 68113	Connectionblock	912 0	4819 500 18108	Screw TH 8x60
501 0	4819 282 18678	Timer EC 4453.01D	912 7	4819 502 18209	Screw JAPY 8x160
551 4	4819 282 48256	Thermostat 40 degree	912 8	4819 502 18208	Screw JAPY 8x110
551 6	4819 282 48255	Thermostat 60 degree	913 1	4819 502 18206	Screw TF 4x12
551 9	4819 282 48254	Thermostat 90 degree	913 4	4819 502 18211	Screw earth

Spare part list

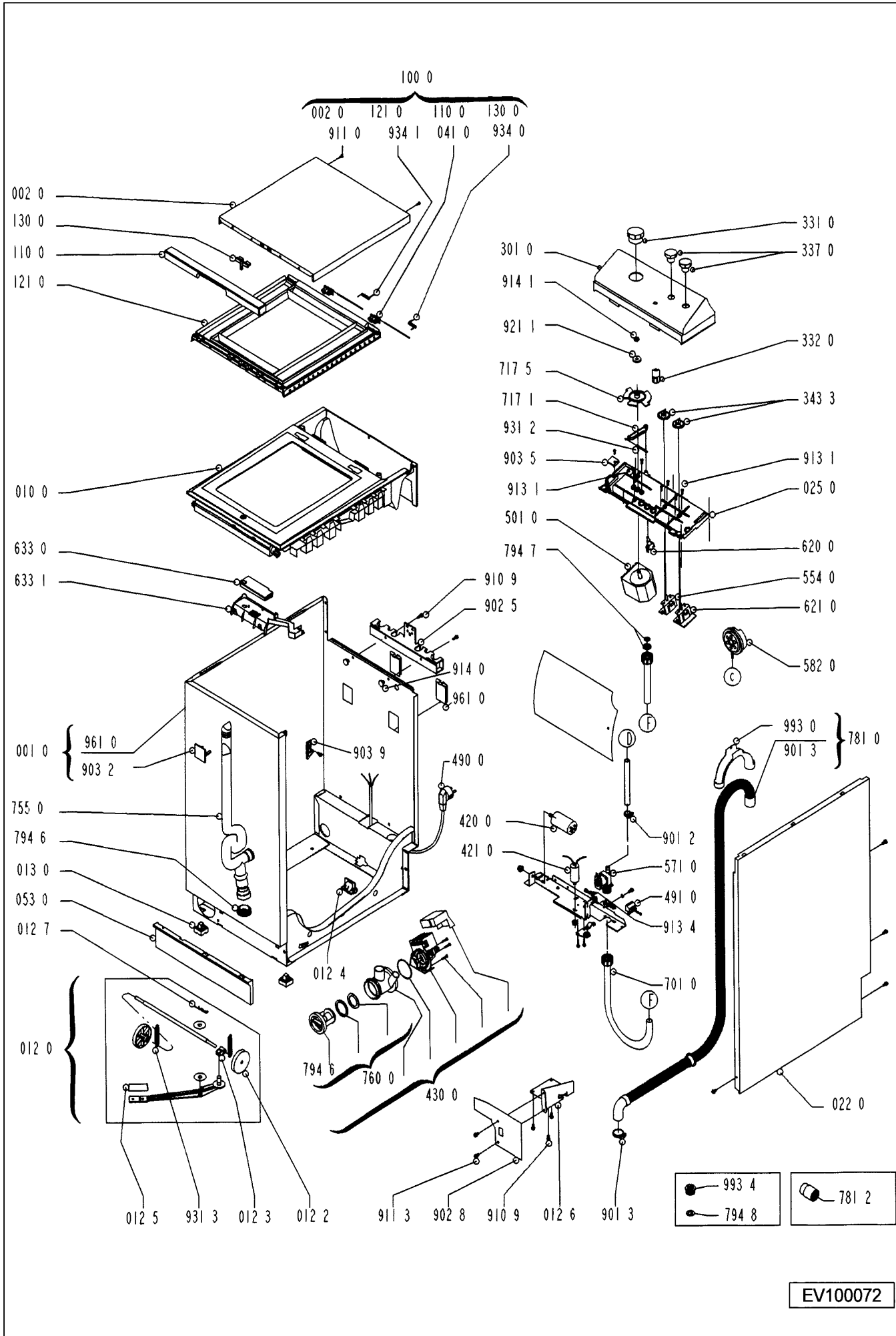
Model AWG 640-1/WP-HU
Service No. 853764044850
Version 853764044850

Pos. No.	12NC Code	Description
914 0	4819 532 68363	Fastener
914 1	4819 505 18283	Nut M 5
915 1	4822 505 10547	Nut
921 1	4819 532 18147	Washer 5,2 x 16
923 0	4819 532 38095	Disc
923 5	4822 505 10148	Washer
923 6	4819 532 58107	Washer 8,3 x 30
923 7	4819 532 18174	Small plate
931 2	4819 492 38084	Spring Slide
931 3	4819 492 38085	Spring
932 3	4819 492 48131	Spring
934 0	4819 492 48125	Spring right
934 1	4819 492 48124	Spring left
941 0	4819 520 28029	Bearing, kit
941 1	4819 520 28026	Bearing
951 0	4819 530 58029	Gasket
952 0	4812 466 68597	Gasket until 01/05/98
953 0	4819 325 68041	Gasket V25
961 0	4819 440 19472	Shutter
993 0	4819 530 29028	Bow
993 4	4819 526 48128	Adapter

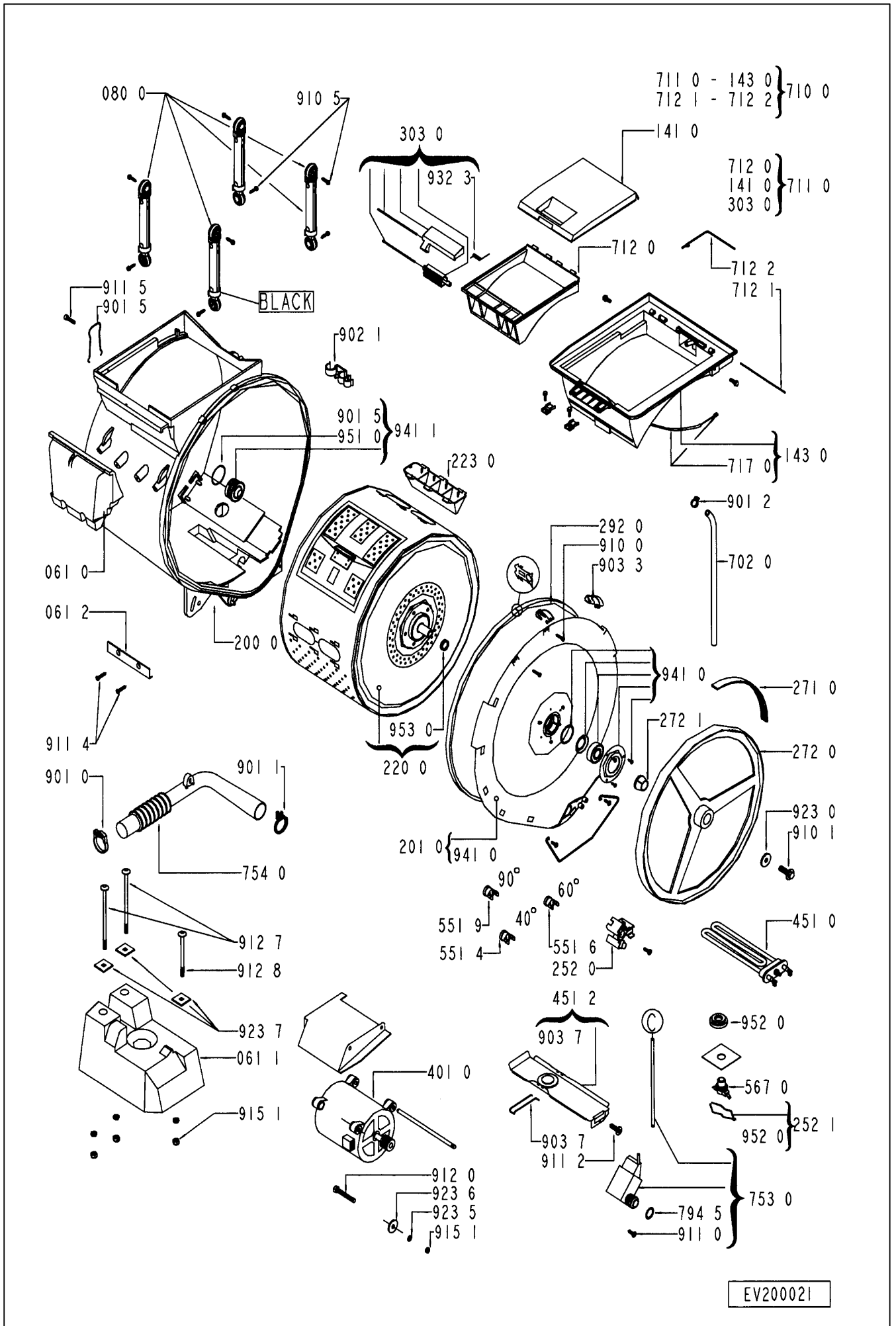
Exploded view to 13/96



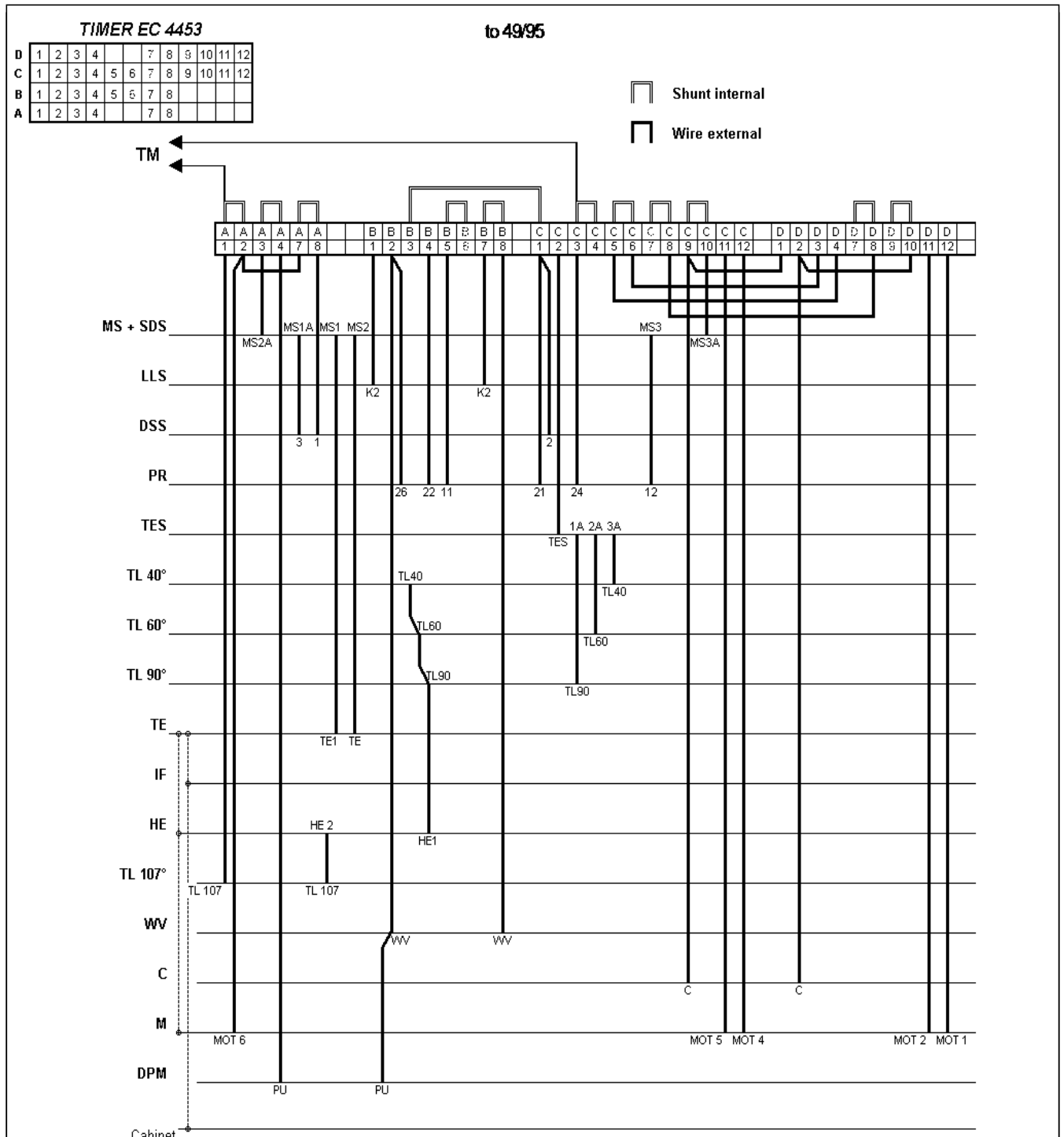
Exploded view from 14/96



Exploded view



Wiring diagram to 49/95



4211 012 9314 1

Tech. model 460T - 560T

Wiring diagram from 50/95

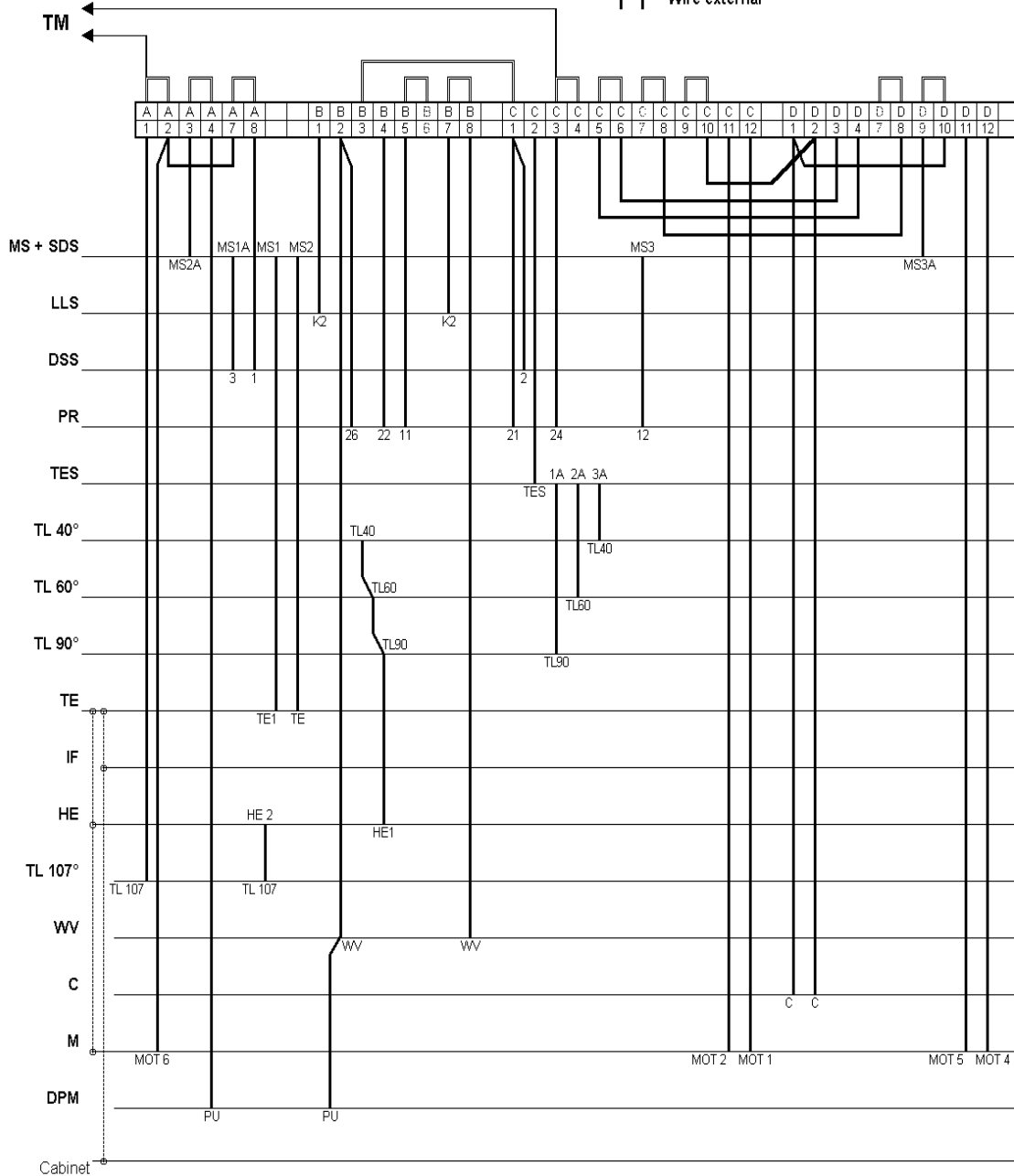
TIMER EC 4453

from 50/95

D	1	2	3	4		7	8	9	10	11	12	
C	1	2	3	4	5	6	7	8	9	10	11	12
B	1	2	3	4	5	6	7	8				
A	1	2	3	4		7	8					

 Shunt internal

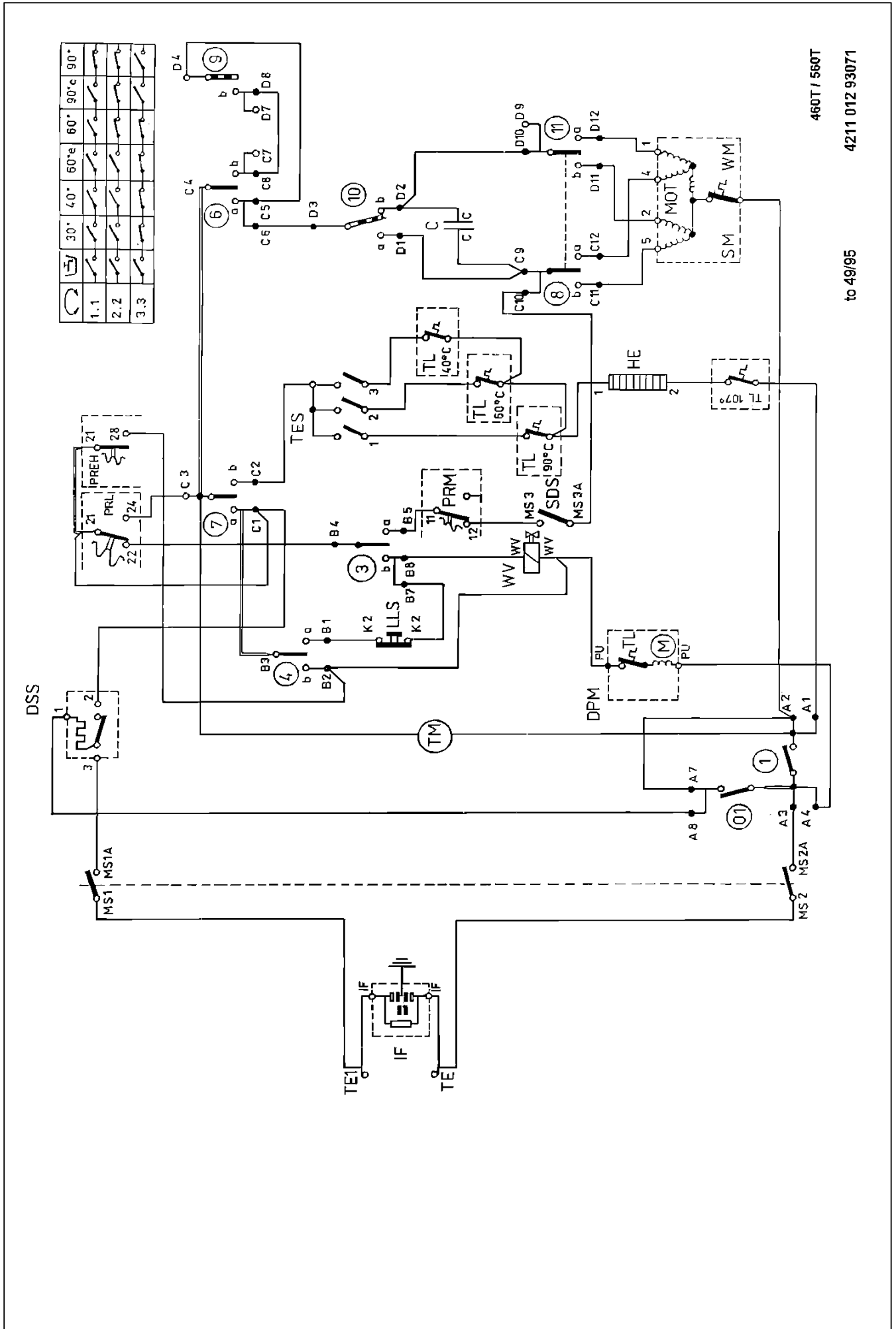
 Wire external



4211 012 9314 2

Tech. model 460T - 560T

Circuit diagram to 49/95

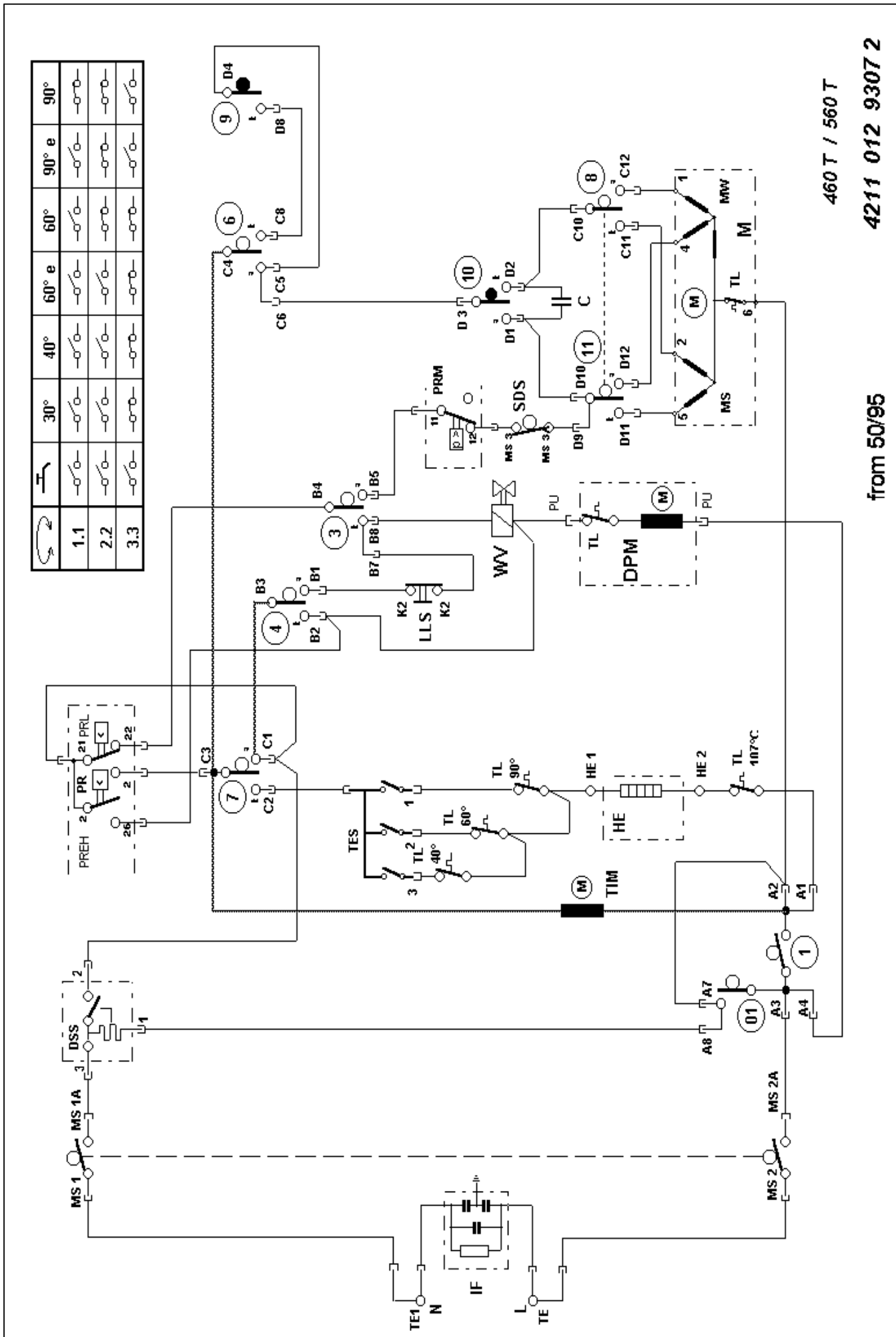


to 49/95

460T / 560T

4211 012 93071

Circuit diagram from 50/95



460 T / 560 T
4211 012 9307 2

from 50/95

Program diagram

